

CONTENTS

	The Association's Network	3
	National Work Injury Statistics Program . .	4
	Key Statistical Measures	5
	Committees & Events	6
	Research & Resources	7
	Website & Social Media	8
	Presentations & YouTube	9
	Information Request Service	10



Learn more about the Association of Workers' Compensation Boards of Canada and explore our range of services for members. If you are an employee of one of our member jurisdictions, you can sign up for a member account to access full services and receive AWCBC eNews delivered to your inbox.

SINCE 1919

**CONNECTING MEMBERS
ADVANCING KNOWLEDGE**



THE ASSOCIATION'S NETWORK

The Association of Workers' Compensation Boards of Canada (AWCBC) was founded in 1919 as a non-profit organization to facilitate the exchange of information between Workers' Compensation **Boards and Commissions**.

Our Vision: AWCBC is the trusted, centralized information source for workers' compensation data, trends, and issues in Canada.

Our Mission: Through excellent data collection and analysis, shared knowledge, education, and networking, AWCBC supports its members in sustaining strong and viable workers' compensation systems throughout Canada.

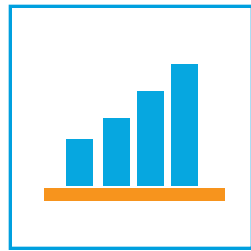


OUR MEMBERS

WorkplaceNL
WCB PEI
WCB Nova Scotia
WorkSafeNB
CNESST QC
WSIB ON

WCB Manitoba
WCB Alberta
Saskatchewan WCB
WorkSafeBC
WSCB Yukon
WSCC NWT/NU



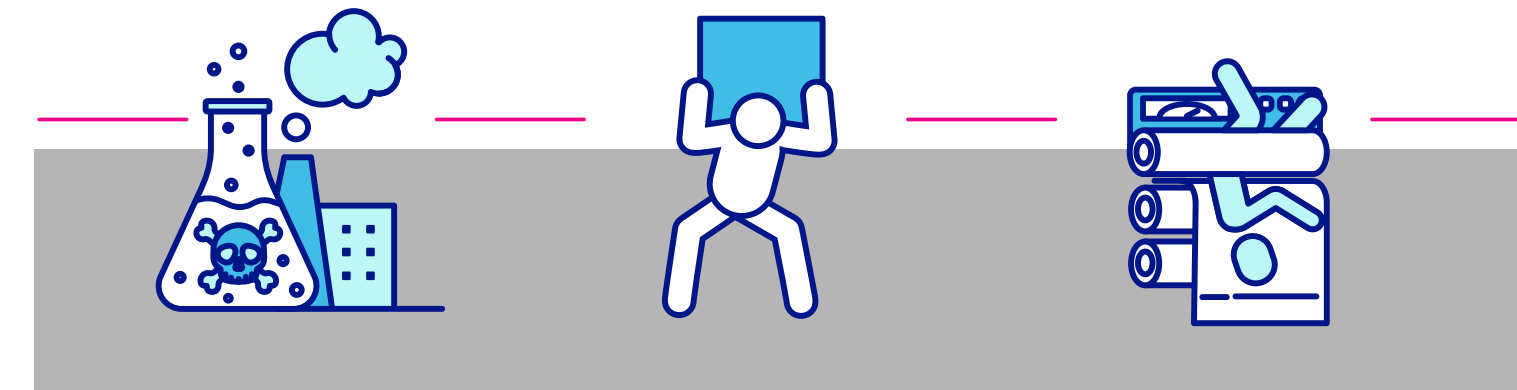


NATIONAL WORK INJURY STATISTICS PROGRAM

The AWCBC manages the [National Work Injury Statistics Program](#) (NWISP), which gathers data on work-related, accepted Lost Time Claims, Diseases and Fatalities across 20 major industries and 10 major occupation groups. The accepted Lost Time Claims, Diseases and Fatalities are broken into 10 categories.

Each year, the AWCBC produces the National Work Injury, Disease and Fatality Statistics Publication, also known as the [NWISP Publication](#), featuring the most recent available figures.

The annual NWISP Publication is posted on the AWCBC website. Also posted are publications from previous years. NWISP Summary Tables, the NWISP [Year at a Glance](#), and Infographics are also publicly available through the AWCBC's website awcbc.org. For specific customized data, a [CUSTOM FORM](#) can be completed online.

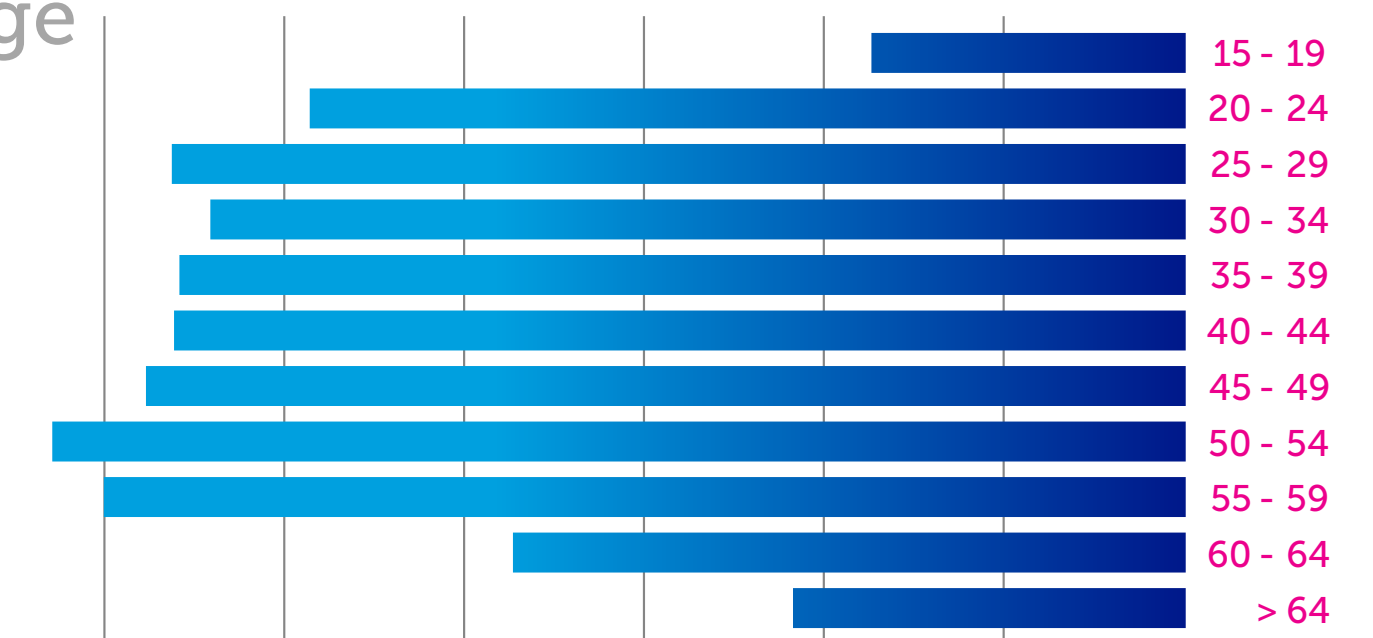


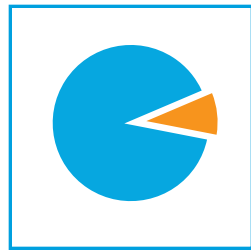
- By Age
- By Source of Injury or Disease
- By Gender
- By Event or Exposure
- By Industry

- By Part of Body
- By Occupation
- By Year
- By Nature of Injury or Disease
- By Jurisdiction

Lost Time Claims in Canada

By Age





KEY STATISTICAL MEASURES

The AWCBC's [Key Statistical Measures \(KSM\)](#) report is your annual snapshot of Canada's workers' compensation landscape. This comprehensive report consolidates figures ranging from injury rates and claim payments to assessment rates, and administrative costs, offering a valuable resource for stakeholders across the system.

The KSM report is available on the AWCBC's website at www.awcbc.org. The site provides customized reporting options, enabling you to generate and download reports tailored to your specific needs.

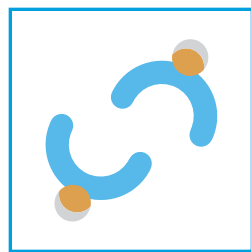
Claim Measures

- Claims
- Injury Frequency
- Fatalities
- Coverage
- Duration
- Return to Work
- Impairment

Financial Measures

- Funding/Investment
- Administrative Costs
- OH&S Costs
- Assessment Rate
- Revenue
- Payroll
- Benefit Costs
- Benefit Liabilities
- Benefit Payments

Claim Measures	CAN	NL	PE	NS	NB	QC	ON	MB	SK	AB	BC	NT/NU	YT	Year at a Glance							
Lost Time Injury Frequency (per 100 workers)	1.58	1.54	1.47	1.83	1.46	1.89	1.09	2.82	2.00	1.39	2.18	2.21	2.05								
Lost Time Claims	251,625	3,368	1,061	6,148																	
Fatalities	951	25	2	14																	
Workforce Covered (%)	84.40	97.44	97.71	74.93																	
Percentage of Wage Loss Claims off Compensation at 90 Days (%)	76.86	68.37	70.31	71.45																	
Duration (Average - Days)	U/A	129.30	69.80	117.33																	
					Financial Measures				CAN	NL	PE	NS	NB	QC	ON	MB	SK	AB	BC	NT/NU	YT
					Percentage Funded (%)				108.70	126.10	159.40	84.10	112.10	109.00	87.90	145.90	133.07	133.76	141.75	110.00	149.80
					Market Rate of Return (%)				6.70	8.51	9.16	6.70	9.16	7.10	6.30	3.50	7.10	7.30	5.40	4.57	5.60
					Current Year Benefit Costs Per \$100 of Assessable Payroll (\$)				0.99	0.98	1.10	1.72	1.50	1.25	0.78	0.74	0.82	0.79	1.15	0.96	1.00
					Administration Costs Per \$100 of Assessable Payroll (\$)				0.30	0.42	0.45	0.40	0.33	0.26	0.38	0.36	0.26	0.19	0.31	0.87	0.74
					Average Assessment Rate (\$)				1.83	2.20	1.77	2.65	1.11	1.84	2.46	1.25	1.34	1.02	1.70	2.00	1.85
					Assessable Payroll (\$ Billions)				575.5	8.4	1.9	10.5	8.8	139.0	171.6	18.2	20.9	99.8	92.4	2.9	1.1



COMMITTEES & EVENTS

A non-profit organization, the AWCBC helps broaden understanding of workers' compensation legislation, issues, and trends. Throughout the year, the Association facilitates topical meetings and events that assist members in sharing their intelligence and expertise with each other across Canada.

Our national office provides formal and informal organizational assistance to AWCBC's eight formal national committees. It hosts the annual All Committees Meeting, Governance Summit, and Staff Learning Symposium.

The AWCBC's Discovery Webinar Series keeps governors connected throughout the year so that they can timely address common issues as they emerge and benefit from sharing their experiences and exploring solutions together.

CONNECTING MEMBERS

AWCBC
All Committees
Meeting



Réunion de tous
les comités de
l'ACATC



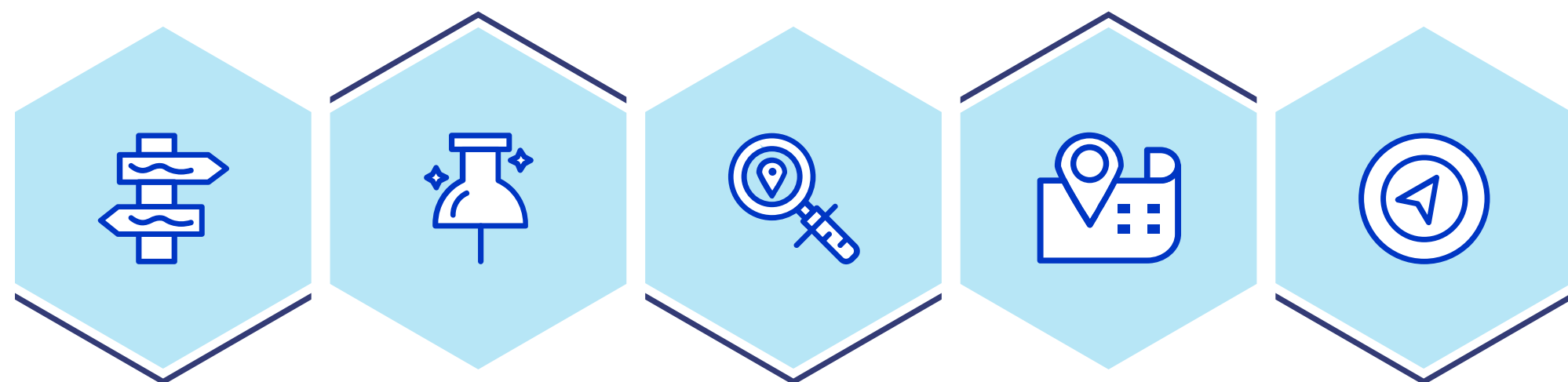
Events
Calendar



RESEARCH & RESOURCES

The AWCBC website contains an inventory of current and past [research](#) from our member jurisdictions as well as a listing of other national and international research resources.

Let us help you navigate to the information you are seeking.





WEBSITE & SOCIAL MEDIA

Stay informed about industry and workplace news from both the national scene and each of our member jurisdictions through the “[News from our Members](#)” section on our website.

Stay ‘in the know’ on what the Canadian media is reporting on Worker’s Compensation from coast to coast through the “[In The News](#)” section on our website.

Follow us on X (formerly Twitter) [@awcbc_acatc](#) and [LinkedIn](#) to stay up-to-the-minute about the innovative and impactful work our member boards/commissions are showcasing on social media.

AWCBC / ACATC
@awcbc_acatc
Association of Workers' Compensation Boards of Canada /
Association des commissions des accidents du travail du Canada
Toronto, Canada [awcbc.org](#) Joined May 2016

SafetyMatters@Work @WCBPEI ·
Safety Talk Spotlight: The best way to prevent work-related injuries caused by falling, slipping, or tripping is to take it one step at a time!
Be cautious when working outdoors, this winter [bit.ly/3ULJy6c](#)
[#safetymatters](#) [#pei](#)

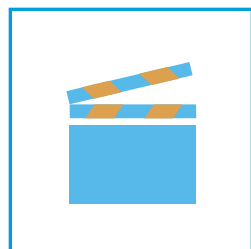
WorkSafeBC @WorkSafeBC ·
Our Policy, Regulation and Research Department is inviting feedback on proposed amendments to Part 16, Mobile Equipment, sections 16.21 to 16.21.1 — Seat belts, of the Occupational Health and Safety Regulation. (cont) [ms.spr.ly/1/6017ivxCX](#)

WCB-Alberta @WCBAlberta ·
Employers, #DYK we offer flexible payment options? With the myWCB mobile app for employers, you can sign up for preauthorized debit & adjust your payment schedule to meet your business's needs.
Questions? Call us! We can offer support, guidance, & we're always here to help.

WorkSafe Sask @worksafesask ·
Form the foundation of a thriving workplace! Whether it's a webinar, workshop or blog, WorkSafe Saskatchewan has free resources for employee psychological health.
[ow.ly/sQN750QkFKR](#)

Find out how you can improve psychological health and safety in your workplace.

Flexible payment options
Take charge of your account with the myWCB mobile app for employers



PRESENTATIONS & YOUTUBE

The AWCBC offers you access to speaker presentations from past AWCBC Governance Summits, Staff Learning Symposiums, and webinars.

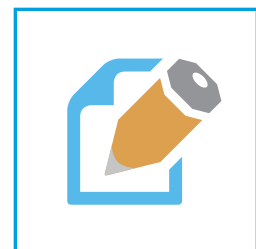
To raise awareness of the importance of health and safety in the workplace, a variety of marketing activities take place throughout the country.

Bookmark the [AWCBC YouTube Channel](#) to view our members' latest client services promotions and/or accident prevention videos.



YouTube
Historic
Compromise

The screenshot displays the AWCBC YouTube channel interface. At the top, the channel name 'AWCBC / ACATC' is visible. Below the channel name, there are navigation tabs for 'HOME', 'VIDEOS', 'PLAYLISTS', 'CHANNELS', and 'ABOUT'. The main content area features a video player for 'AWCBC Video Brochure' with a red maple leaf background. Below the video player, there are several video thumbnails organized into playlists. The first playlist is 'Prevention - Occupational Health & Safety', which includes videos like 'Témoignage de Réjean Pelletier', 'Prévention au travail - Hiver 2024', 'Balado Dans mon temps, épisode commerce de détail', and 'Balado Dans mon temps, épisode agriculture'. The second playlist is 'COVID-19 Workplace Health and Safety', featuring videos such as 'Continue to Follow Your COVID-19 Workplace Safety Plan', 'Couvre-visage, masque médical ou N95', 'COVID-19 Work Safe online course', 'Managing Pandemic Fatigue', 'Work Safe Vaccine', and 'COVID-19 Safety Plan Step 3: Develop and Communicate...'. The third playlist is 'Industry Specific Occupational Health and Safety', with videos like 'Webinar - MSI - Educating your Workplace to Prevent...', 'Webinar - MSI - Eye Injuries and Protection', 'What to expect when an Occupational Health and...', 'The Value of SAFE Work 2022', '2022 WSIS Annual Meeting', and 'The Signal Podcast #10: Move Well - Work Well Wee...'. The left sidebar contains navigation options like 'Home', 'Trending', 'Subscriptions', 'Library', 'History', 'Your videos', 'Watch later', 'Seriously Great Music', and 'Liked videos'. At the bottom of the sidebar, there are links for 'About', 'Press', 'Copyright', 'Contact us', 'Creators', and 'Advertise Developers'.



INFORMATION REQUEST SERVICE

Our centralized Information Request Service allows members to canvass each other on any business matter in any discipline. The results are collated, shared with participants, and then stored in a national depository for future access by all members.

Whether you require a quick statistical comparison to other provinces and territories or a specific customized report, assistance with an event or committee meeting, or simply a forum for group discussion, the AWCBC is here to help you.

416-581-8875 or toll free 1-855-282-9222

contact@awcbc.org

Suite 1007, 40 University Avenue, Toronto, ON M5J 1T1



Learn more about the Association of Workers' Compensation Boards of Canada and explore our range of services for members. If you are an employee of one of our member jurisdictions, you can sign up for a member account to access full services and receive AWCBC eNews delivered to your inbox.

[Go to the website now to register.](#)

