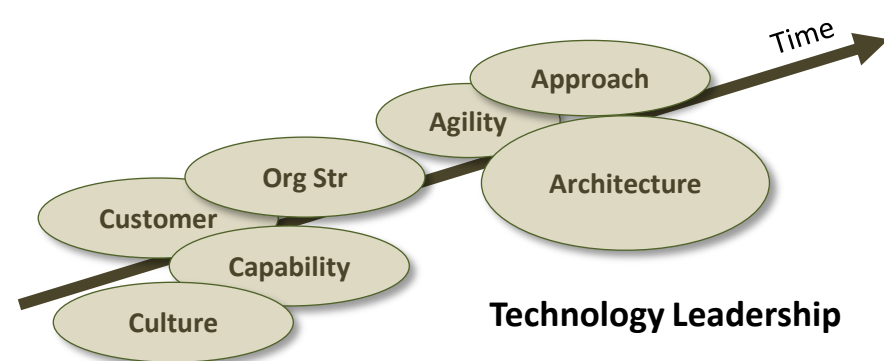
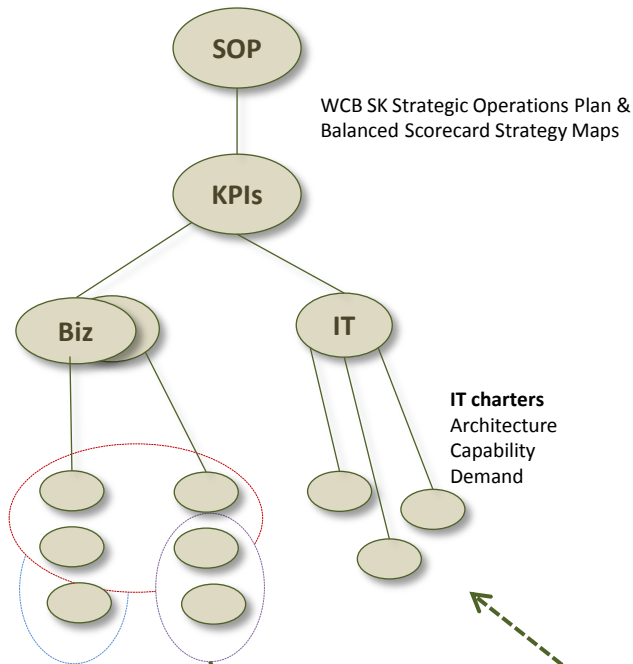
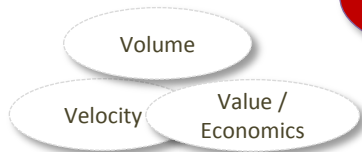


## Business Leadership



## People & Process Leadership

❶ Business projects are inter-linked with disruptive & environmental changes, needs



Our **business** either stands to benefit from, or are impacted by specific disruptive **Business Technologies**

❸ IT strategic projects use this co-relation to plan & improve **IT** Maturity & Performance around specific **Business Technology Areas**

❷ A logical co-relation exists between these **Business Technologies** and IT + business performance (agility, knowledge, capability set)

❹ Jointly developed **Business Technology Roadmaps** provide contextual direction for Enterprise planning functions around People, Process, Capabilities and Technology Architecture.

Each BT area is supported and promoted across the enterprise by a **Business Executive Sponsor**