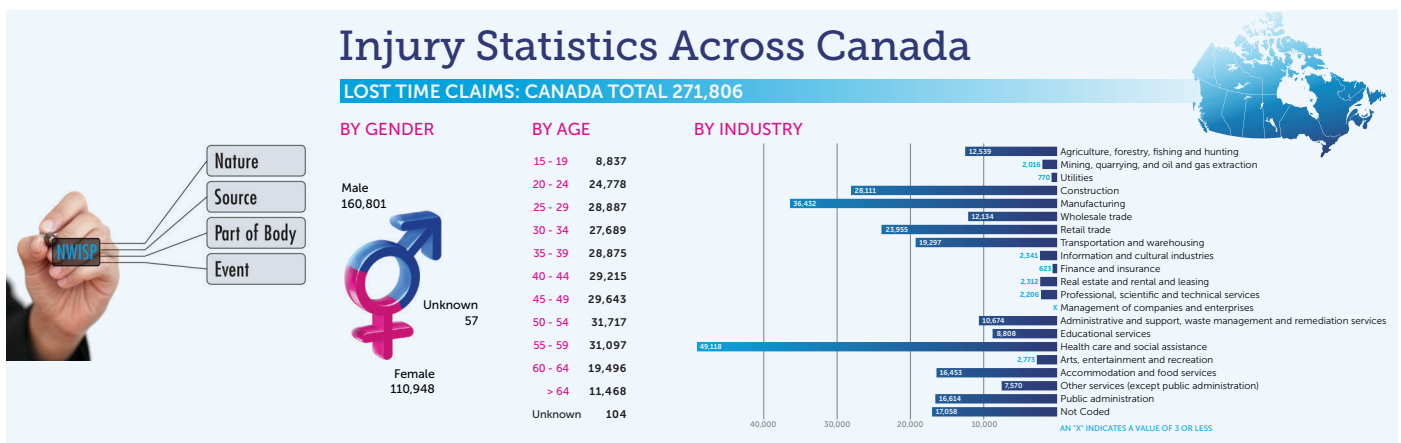


National Work Injury Statistics Program

The AWCBC manages the National Work Injury Statistics Program (NWISP), which gathers data on work-related, accepted Lost Time Claims, Diseases and Fatalities across 20 major industries and 10 major occupation groups. The accepted Lost Time Claims, Diseases and Fatalities are broken into 10 categories.



Each year, the AWCBC produces the National Work Injury, Disease and Fatality Statistics report, featuring the most recent available figures, presented over a three-year span for comparison purposes.

Provincial and territorial Workers' Compensation Boards and Commissions amass such information from submissions by primary sources – workers, employers and health-care practitioners – within their jurisdictions. This data is then coded according to several different factors and forwarded to the NWISP, where it is set into the appropriate statistical framework that allows for summaries both nation wide or by individual jurisdictions, as well as multiple cross-tabulation.

It is important to note that, while the statistics are consistent over time in each jurisdiction, variances can arise when making inter-provincial/territorial comparisons, due to differing acts, regulations, policies and procedures, or even the exclusion of specific businesses within industrial categories.

The annual National Work Injury, Disease and Fatality Statistics (NWISP) Publication is posted on the AWCBC website. Also posted, are publications from previous years. NWISP Summary Tables, the NWISP Year at a Glance and Infographics are also publicly available through the AWCBC's website awcbc.org. For specific customized data, a CUSTOM FORM can be completed online.

NWISP Categories

- Years
- Jurisdictions
- Industry
- Occupation
- Nature of Injury/Disease
- Source of Injury/Disease
- Part of Body
- Event
- Age
- Gender

Industry Groups

- Agriculture, forestry, fishing and hunting
- Mining, quarrying, and oil and gas extraction
- Utilities
- Construction
- Manufacturing
- Wholesale trade
- Retail trade
- Transportation and warehousing
- Information and cultural industries
- Finance and insurance
- Real estate and rental and leasing
- Professional, scientific and technical services
- Management of companies and enterprises
- Administrative and support, waste management and remediation services
- Educational services
- Health care and social assistance
- Arts, entertainment and recreation
- Accommodation and food services
- Other services (except public administration)
- Public administration

Occupation Groups

- Management occupations
- Business, finance and administration occupations
- Natural and applied sciences and related occupations
- Health occupations
- Occupations in education, law and social, community and government services
- Occupations in art, culture, recreation and sport
- Sales and service occupations
- Trades, transport and equipment operators and related occupations
- Natural resources, agriculture, and related production occupations
- Occupations in manufacturing and utilities

Data Definitions

- Lost Time Claim

An injury where a worker is compensated for wage loss following a work related injury or exposure to a noxious substance, or receives compensation for a permanent disability whether or not any time has been lost on the job (for example, compensation for hearing loss caused by excessive workplace noise).

- Fatality

A death resulting from a work-related incident or disease that has been accepted by a WCB.

The NWISP database does not contain statistics on the following:

- Injury, disease and fatality costs
- Days or hours lost due to injury or disease
- Number of workers covered by WCBs
- Non-work-related injury, disease or fatality
- Injury, disease or fatality affecting workers not covered by WCBs
- Except for permanent disability claims, work-related injury or disease that does not involve lost time
- Case studies or reports on specific injury or disease