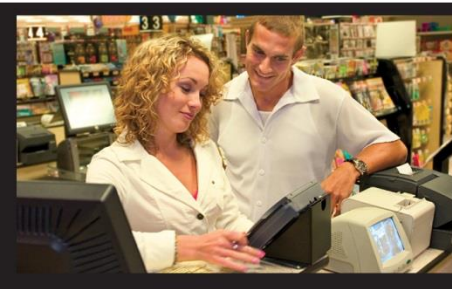


# Jurisdictional Update MANITOBA

Jamie Hall, Chief Operating Officer  
SAFE Work Manitoba



# Safety Performance in Manitoba



**Total Lost Time Injury Claims**

**14,167**

# Safety Performance in Manitoba



# Safety Performance in Manitoba



# **Safety Performance in Manitoba**

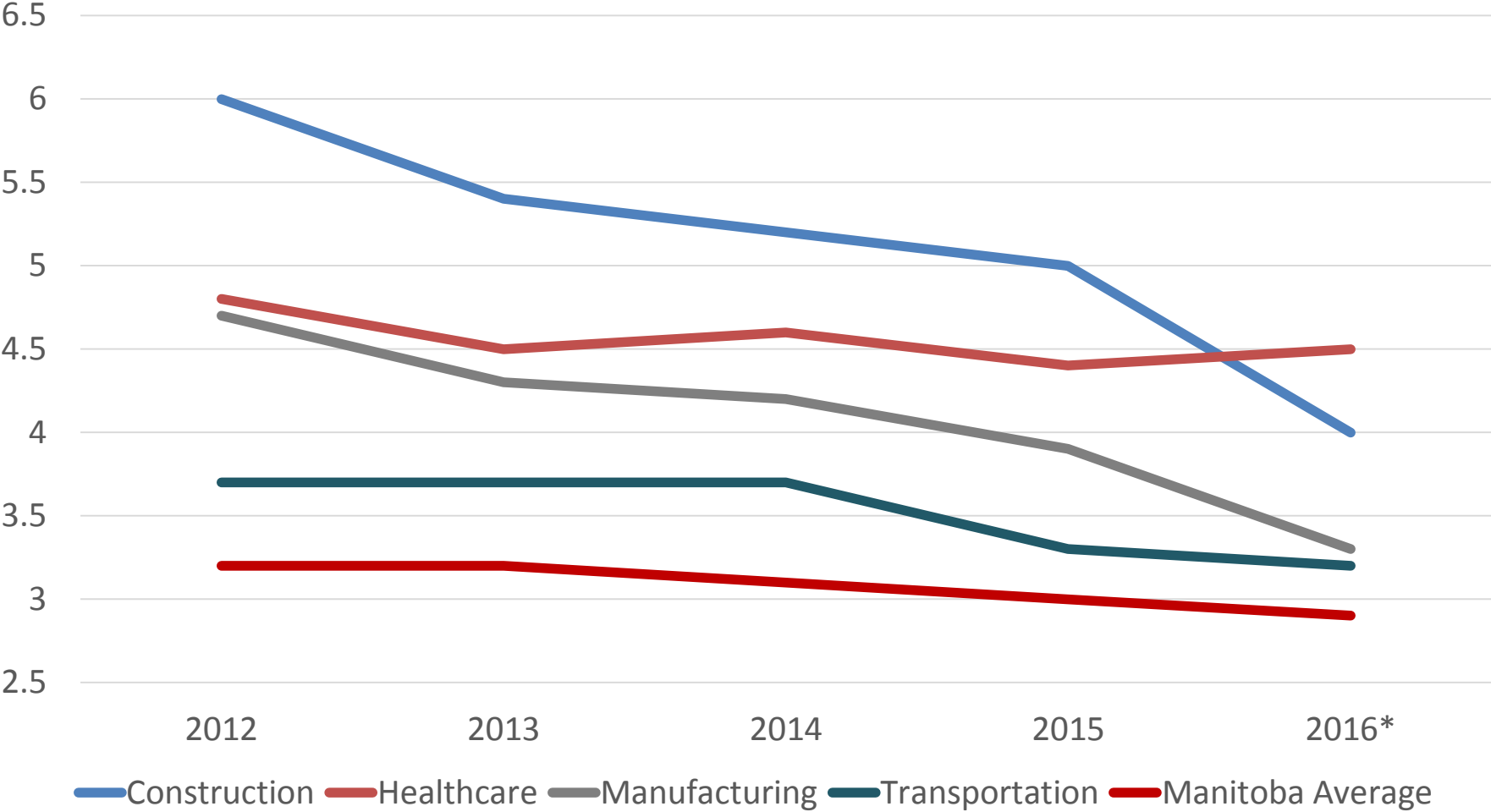
**Time loss injury rate**

**2.9\***

**Number of injuries per 100 workers**

# Time Loss Injury Rates

(Time Loss Injuries per 100 FTEs)





**Capacity**



**Standards**



**Rebate**

**Culture**

# Industry-Based Safety Programs





# Industry-Based Safety Programs Metrics

## INDUSTRY-BASED SAFETY PROGRAMS



### GOAL

Increase percentage of employers and workers serviced by an IBSP

### METRIC

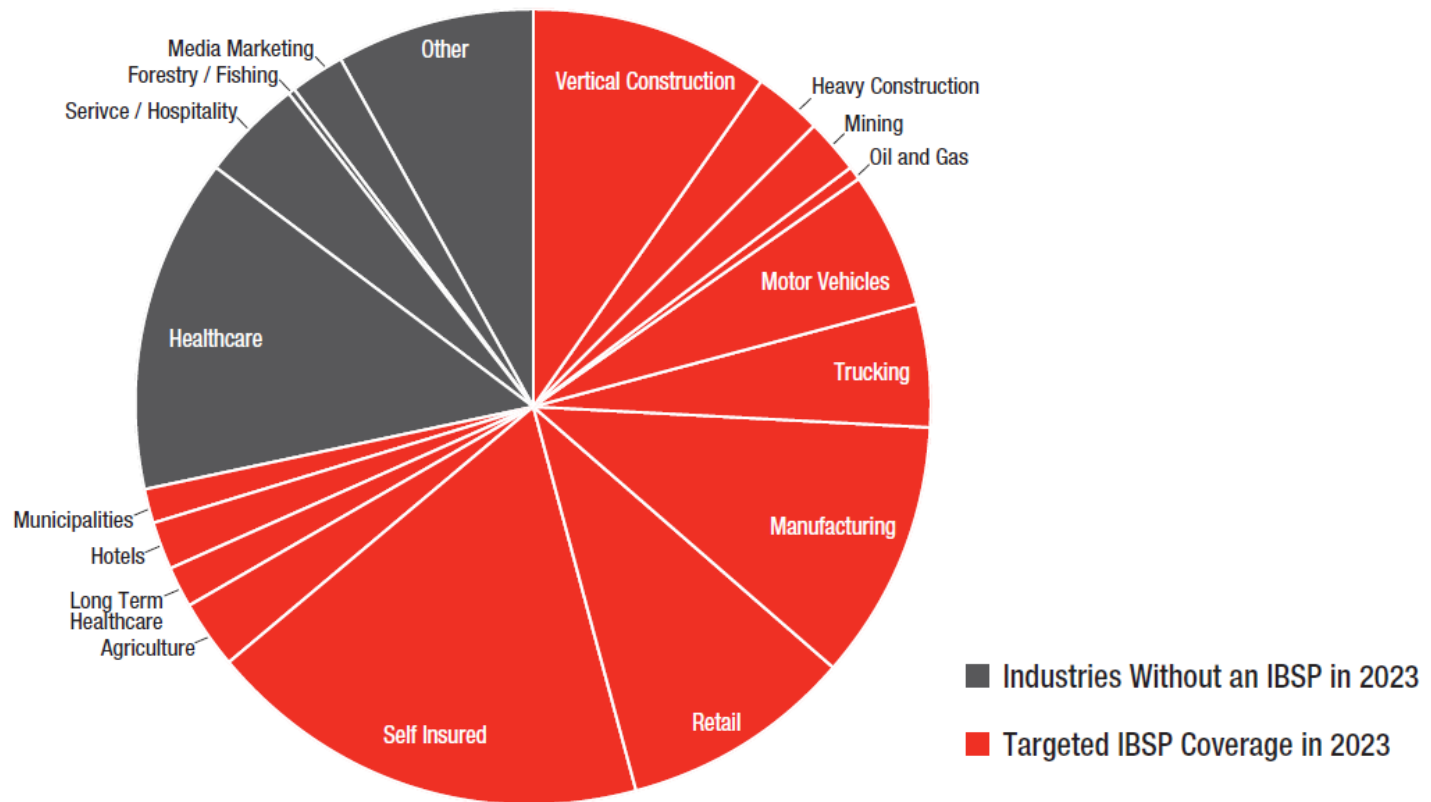
Percentage of WCB-covered payroll served by an ISBP



# Industry-Based Safety Programs Targets

Industry Based Safety Program Coverage - 2023

Target- 72%





**Capacity**



**Standards**



**Rebate**

**Culture**



# Benefits of Safety and Health Certification



**42%**  
all injury rates



**47%**  
time-loss injury rates

*(Based on WCB's Safety Certification Analysis – 2000 to 2015)*

# Benefits of Safety and Health Certification

**On average, a company that became certified experienced:**



**37%**

injury costs per worker from claims reported to the WCB



**ALMOST HALF AS MANY**  
work days taken per worker from claims reported to the WCB.

***(Based on WCB's Safety Certification Analysis – 2000 to 2015)***

# Certified programs must demonstrate...



**Leadership  
commitment**



**Hazard  
identification  
and risk  
control**



**Worker  
participation**

# Safety Certification Metrics

## SAFETY CERTIFICATION

### GOAL

Increase percentage of employers with workplace safety and health practices consistent with provincial standards

### METRIC

Percentage of WCB-covered payroll SAFE Work Manitoba certified







**Capacity**



**Standards**



**Rebate**

**Culture**

# Prevention Rebate

- **15% rebate on WCB premium**
- **Or**
- **\$3,000 rebate up to a maximum of 75% of WCB premium**
- **Begins 2018**



# Prevention Rebate

- **Eligibility**
  - **SAFE Work Certified**
  - **Compliance**
    - **WSH Act**
    - **WCA**
    - **CLC Part 2**



# Strategic Priorities



**Capacity**



**Standards**



**Rebate**

**Culture**

# Safety Culture Defined

- **Safety culture is a set of shared values and beliefs that influence actions and practices regarding workplace safety and health, shaping how decisions are made, how the organization operates and how peers and leadership build safe and healthy workplaces.**

# Values

- **People value and expect safety and health in the workplace.**
- **People in the workplace are our most valuable resource.**
- **Safety and health is valued with productivity, quality and pay.**

# Beliefs

- **Workplace injuries and illnesses can be prevented.**
- **Leaders drive improvement.**
- **We all play a part in building healthy and safe workplaces.**

# Workplace Dimensions

- 1. Hazards and concerns addressed**
- 2. Leadership commitment**
- 3. A respectful work environment**
- 4. Accountability**
- 5. Inclusiveness**
- 6. Continuous learning**



# Societal Dimensions

- 1. Institutions invested in education and training**
- 2. Public demands safety and health as the norm**
- 3. Leadership investment**
- 4. Progressive laws and standards**

# Strategic Priorities



**Capacity**



**Standards**



**Rebate**

**Culture**

# Other Stuff

- **Strategy Documents**
  - **Young Worker**
  - **MSI**
  - **Psychological Safety & Health**
  - **Occupational Hygiene**
- **Social Marketing**
  - **Worked Up – Young Workers**

# Stay Informed: Safety and Health Information



[safemanitoba.com](http://safemanitoba.com)



[Information@safeworkmanitoba.ca](mailto:Information@safeworkmanitoba.ca)



(204) 957-SAFE (7233)



[@SAFEWorkMB](https://twitter.com/SAFEWorkMB)



[SAFE Work Manitoba](https://www.linkedin.com/company/safe-work-manitoba)



[SAFE Work Manitoba](https://www.facebook.com/SAFEWorkManitoba)